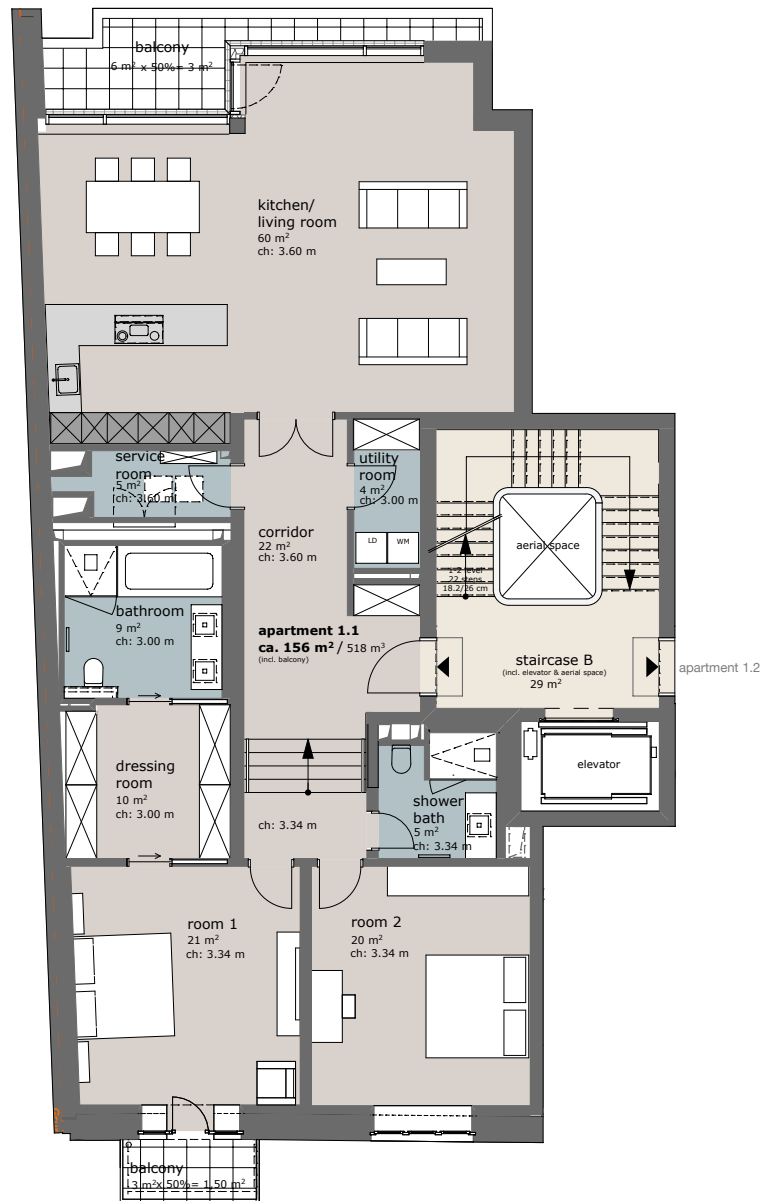


Legend scale 1:100

- parquet flooring
- tiles
- stone slabs
- prefabricated concrete tiles
- Wood-Polycarbonate



first floor

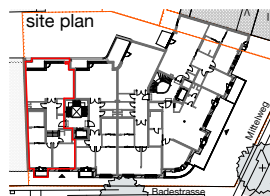
**Mittelweg 169/  
Badestrasse 2**

apartment 1.1  
ca. 166 m<sup>2</sup> - 3 rooms

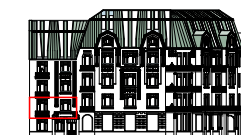
Badestrasse 2, 20148 Hamburg

Cinco Capital GmbH  
for more information:  
[www.apartmentum.de](http://www.apartmentum.de)

KPW PAPAY WARNCKE UND PARTNER ARCHITEKTEN



elevation Badestrasse



Planning, detailing and proposed materials are subject to change, within reason, if required due to technical, functional or regulatory purposes. The proposed furnishings are illustrative and solely shown for demonstration purposes. For the complete (or can use 'definitive') Scope of Works, please refer to the building description. Within the Total Net Area, Garden terraces make up 25%; balconies/ loggias/ roof terraces make up 50%. All area measurements indicated on the plans are approximate values and may be subject to change during the planning process.